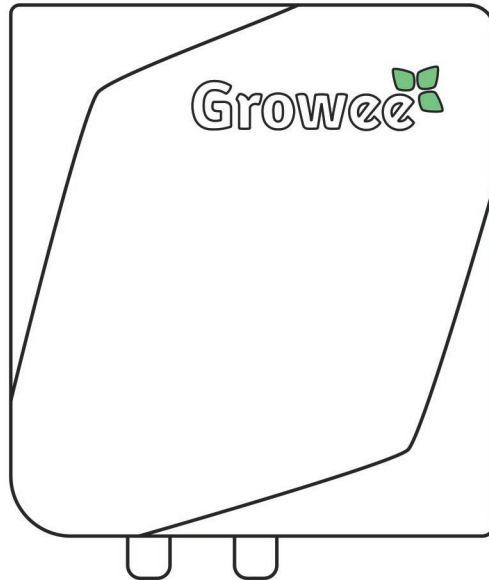
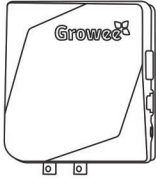


# Hydro Master

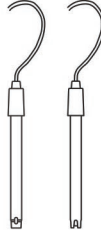
## Quick Start Guide



# What's In The Box



Hydro Master

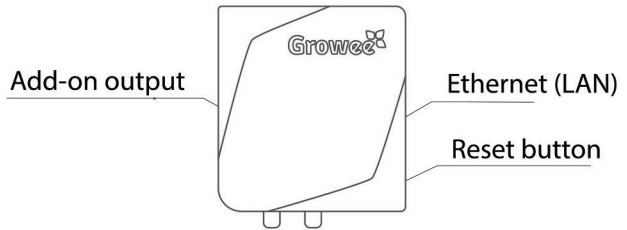
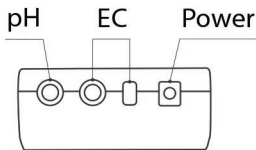


pH & EC Probes



Power Adapter

# Inputs and Outputs



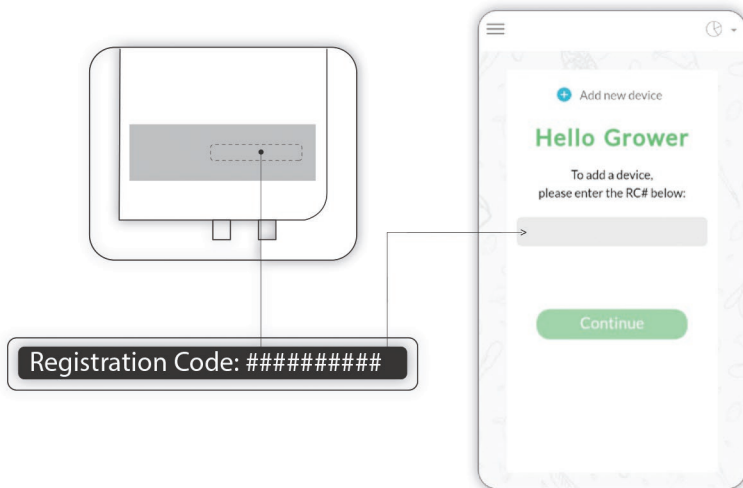
# Set up your Hydro Master

## Step 1: Add your new device to the app

A. Download the Growee app, create an account and log in.



B. Press "Add new device" and enter your device's registration code, located on the **back of the Hydro Master**.



C. Complete the setup process on the app from start to finish in order to move to Step 2. Don't worry settings can be edited after step 3 at anytime.

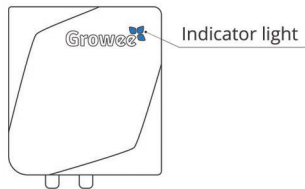
D. Close the app and move to step 2.

## Step 2: Connect the Hydro Master to your WiFi network

### Requirements:

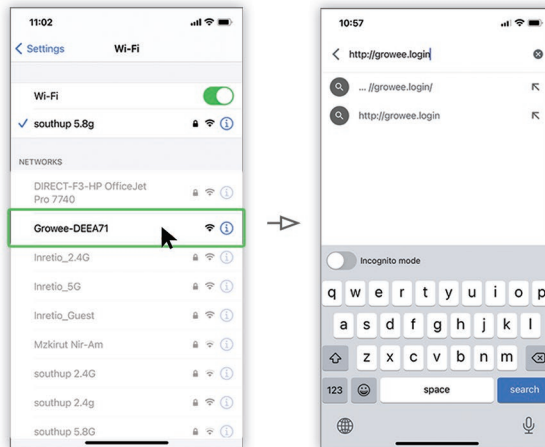
- Good WiFi reception
- Your network name and password
- Your registration code, located on the back of the Hydro Master
- Step 1 must be completed

**A.** Connect the Hydro Master to a power supply. The indicator light will blink until the following process is complete.



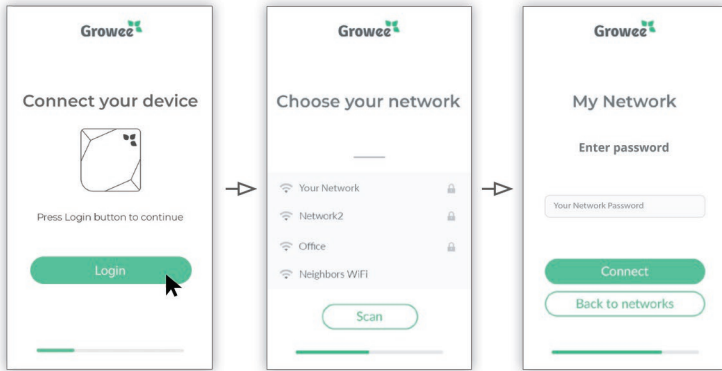
**B.** Using your mobile device, go to network settings and choose `Growee_#####`.

**C.** Go to your web browser and enter <http://growee.login> to open the Growee window.



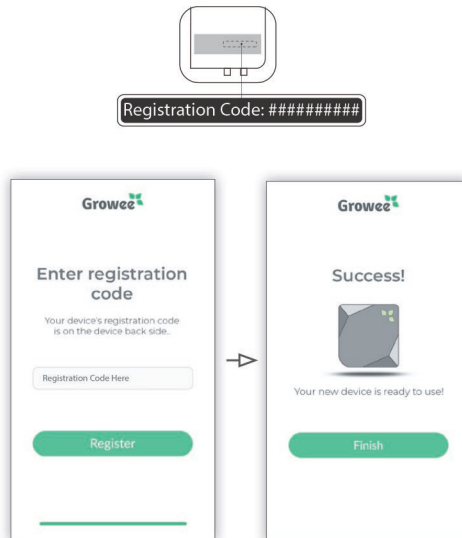
**D.** On the new Growee window, press "Login".

**E.** Choose your WiFi network from the list and enter your WiFi network password. If the network name doesn't appear, press "Scan".



**F.** Enter the Hydro Master's registration code placed on the back of the Hydro Master.

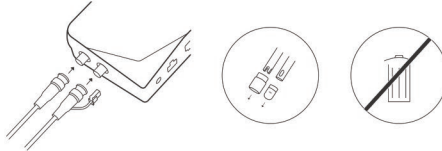
**G.** Press "Finish". You're done. The indicator light will show a constant green light, It should take up to 1 minutes. Open the app and start growing!



## Step 3: Install your Hydro Master on the wall

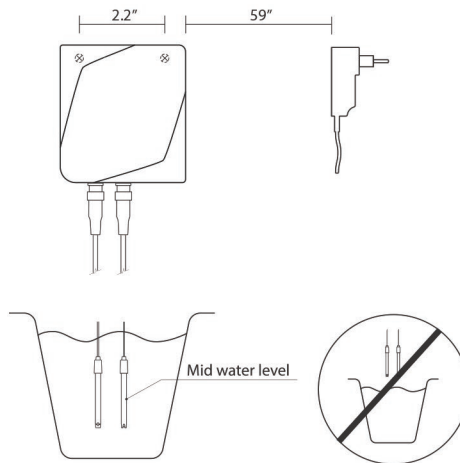
**Important notice:** Good WiFi reception or LAN connection is required.

**A.** Attach the probes to the Hydro Master and **remove the probe caps.**



**Important notice:** Do not throw away the probe caps or soaking solution. Read the complete Maintenance and Storage Instructions.

**B.** Measure and mark the distance above the reservoir that will allow the Hydro Master probes to hang at mid-water level.



**Important notice:** Probes should NOT hang above the water level and must be submerged at all times.

**C.** Installation is complete. Start growing!

# Connecting the Hydro Master to a new WiFi network

**Important notice:** The next guide will instruct you on how to connect your Hydro Master to a new network **after** completing the installation process or using the device.

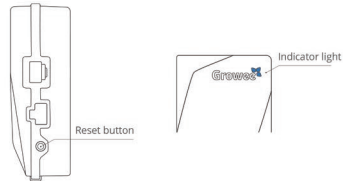
Requirements:

- A Hydro Master that has already been installed or used
- Good WiFi reception
- Your new network name and password
- Your registration code (located on the back of the Hydro Master)

**A.** Connect the Hydro Master to a power supply.

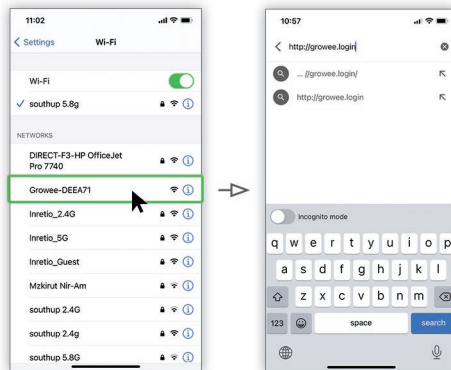
**B.** Press the reset button located on the right side of the Hydro Master for 3 seconds.

The indicator light will blink until the following process is complete.



**C.** Using your mobile device, go to network settings and choose Growee\_#####.

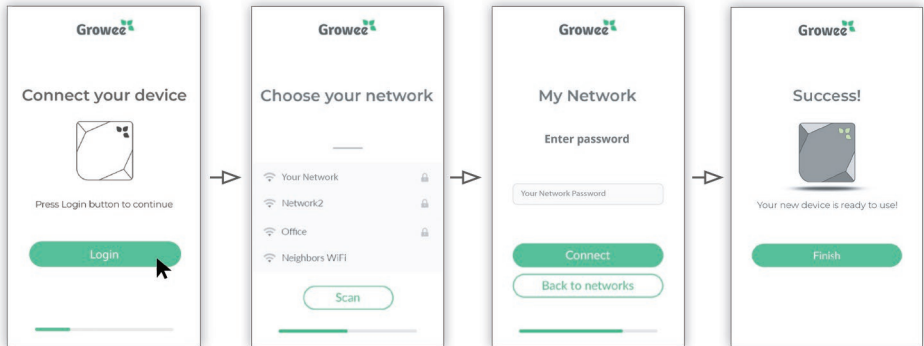
**D.** Go to your web browser and enter <http://growee.login> to open the Growee window.



**E.** On the new Growee window, press “Login”.

**F.** Choose your WiFi network from the list and enter your WiFi network password. If the network name doesn't appear, press “Scan”.

**G.** Press “Finish”. You're done. The indicator light will show a constant green light. Open the app and start growing!



For support and instructional videos, visit our website:  
**[www.GetGrowee.com](http://www.GetGrowee.com)**

If you still need help, don't hesitate to contact us at  
**[Support@GetGrowee.com](mailto:Support@GetGrowee.com)**